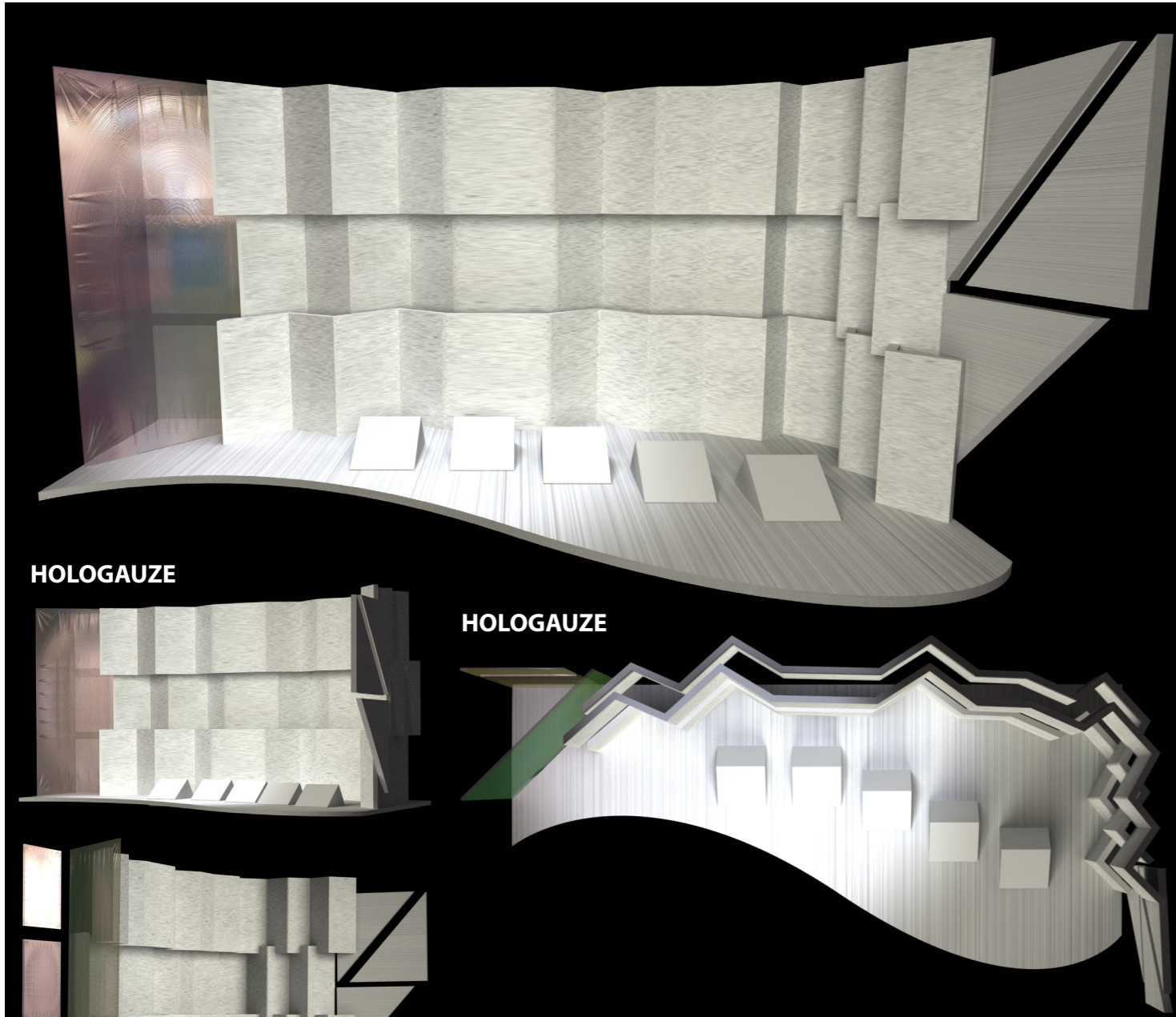
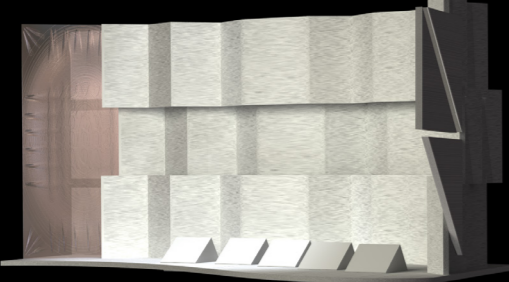


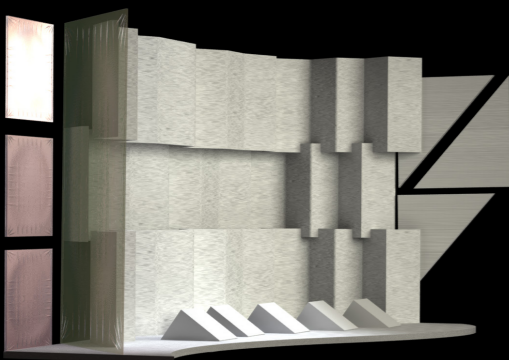
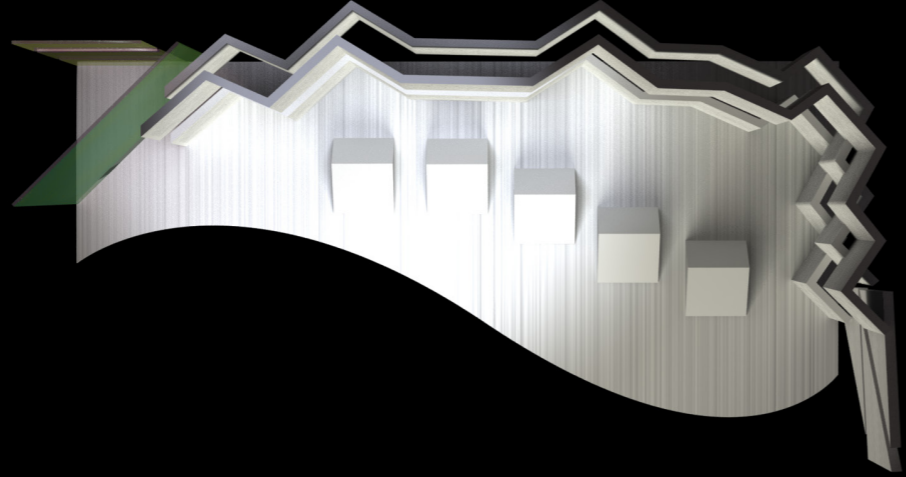
FRONT VIEW



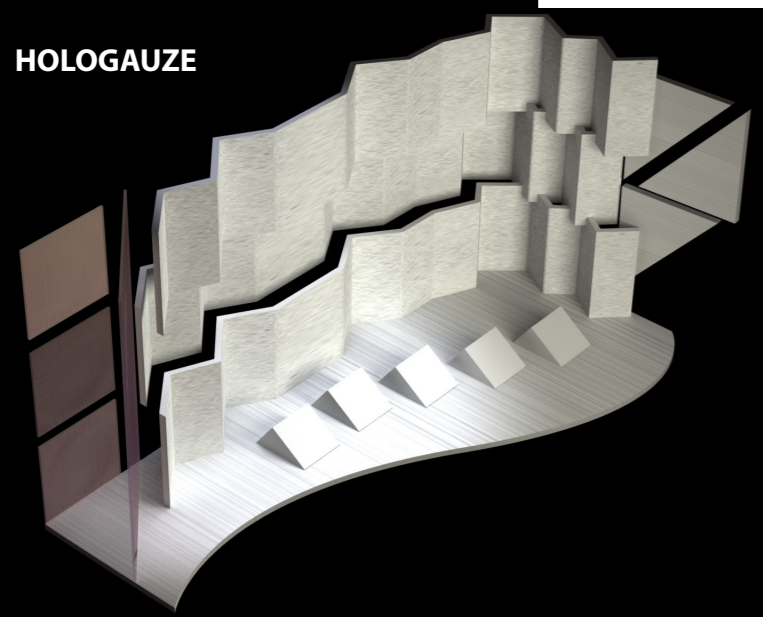
HOLOGAUZE



HOLOGAUZE



HOLOGAUZE



MATERIALS: CORE FLUTE, HOLOGAUZE & 32000 LUMENS OF LIGHT

Launch Wednesday 7pm 16 August (Invited guests)
Public Show 7pm, 17-19. Thursday, Friday and Saturday. Pack down Sunday.

Seating 87 (eighty seven) people to allow for suitable viewing room for set.

Projector space - 2 projectors - left & right last row seating removed.

Sponsored by

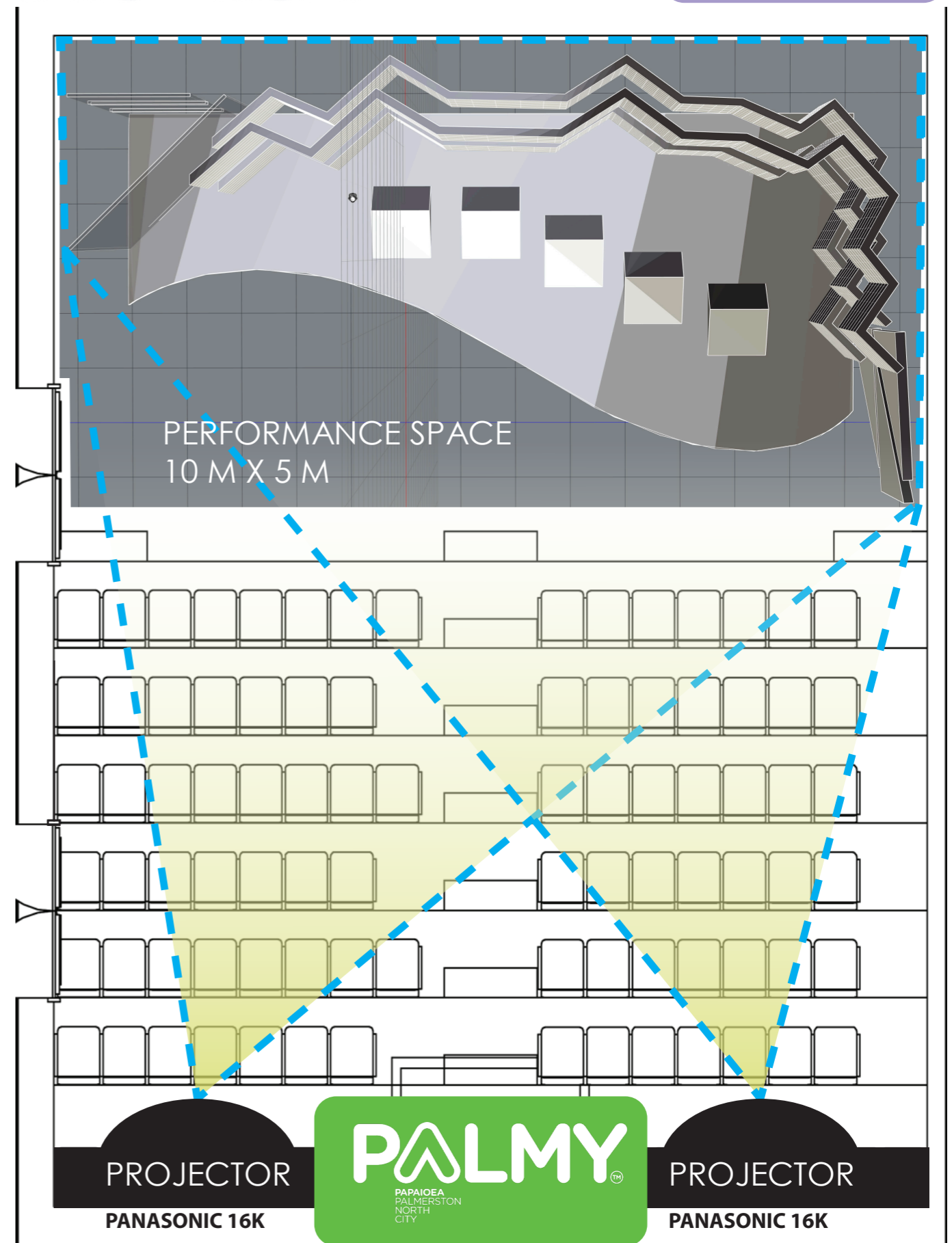


Earle Creativity Trust

globe
theatre

HIGHLIGHT

GLOBE 2
SEATING : 87



PERFORMANCE SPACE
10 M X 5 M

PROJECTOR
PANASONIC 16K



PROJECTOR
PANASONIC 16K